

State of Wyoming Corner Record

(In compliance with the CORNER PERPETUATION AND FILING ACT, Wyoming Statutes, 2013 Section 33-29-901 through 33-29-910, and the Rules and Regulations of the Board of Professional Engineers and Professional Land Surveyors)

Reverse side of this form may be used if more space is needed.


Record of original survey and citation of source of historical information (if corner is lost or obliterated). Description of corner monumentation evidence found and/or monument and accessories established to perpetuate the location of this corner. Sketch of relative location of monument, accessories, and reference points with course and distance to adjacent corner(s) (if determined in this survey). Method and rationale for reestablishment of lost or obliterated corner.

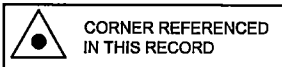
RECOVERED: Brass Cap, PLS 2500, 1983, Witness Corner, 70' west of true corner position.

SET: Nothing

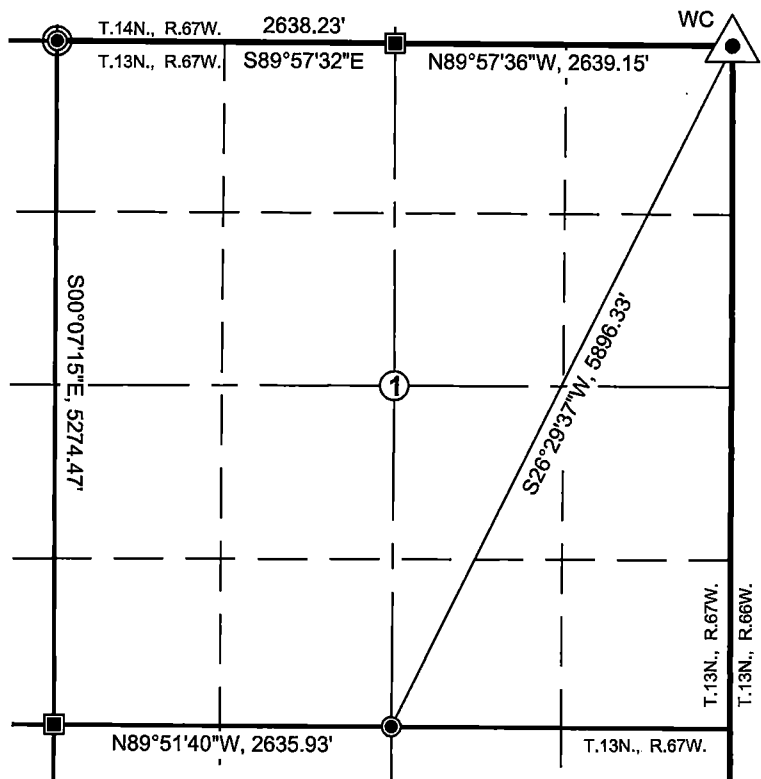
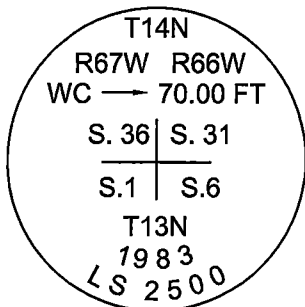


LEGEND

-  SET ALUMINUM CAP
-  EXISTING ALUMINUM CAP
-  EXISTING IRON PIPE
-  EXISTING REBAR
-  EXISTING STONE
-  EXISTING BRASS CAP



MONUMENT INSCRIPTION



Date of Field Work: 06/20/2019 to Present Project No.: 2019-022 Point Number: 2801

Basis of Bearings: Wyoming State Plane Coordinate System, East Zone; Distances: Ground

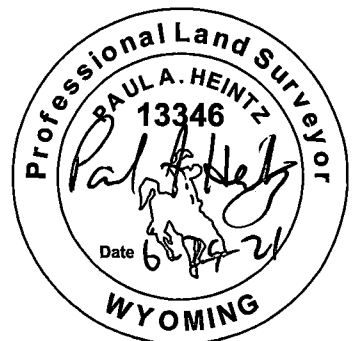
CROSS INDEX PLAT

	1	2	3	4	5	6	7	8	9	10	11	12	13	14	15	16	17	18	19	20	21	22	23	24	25	
A																										
B																										
C			6		5																					
D																										
E																										
F																										
G			7		8																					
H																										
J																										
K																										
L			18		17																					
M																										
N																										
O																										
P			19		20																					
Q																										
R																										
S			30		29																					
T																										
U																										
V																										
W																										
X			31		32																					
Y																										
Z																										
	1	2	3	4	5	6	7	8	9	10	11	12	13	14	15	16	17	18	19	20	21	22	23	24	25	

Prepared/Filed By:
Paul A. Heintz

WWC Engineering
5880 ENTERPRISE DR, STE 600
CASPER, WY 82609
(307) 473-2707

This corner record was prepared by me or under my direction and supervision.
SEAL & SIGNATURE



RECP #: 814340
RECORDED 7/7/2021 AT 11:08 AM BK# 2744 PG# 182
Debra K. Lee, CLERK OF LARAMIE COUNTY, WY PAGE 1 OF 1

Corner Name: Sw 1/4 Cor., Section 31 T.14N., R.66W., 6th P.M.

Laramie County, Wyoming

Cross Index: Z-1